



# K | SERIES

Helical Bevel Gear Units

## GENERAL PART LIST

EN

[www.nrwdrivetechnologies.com](http://www.nrwdrivetechnologies.com)

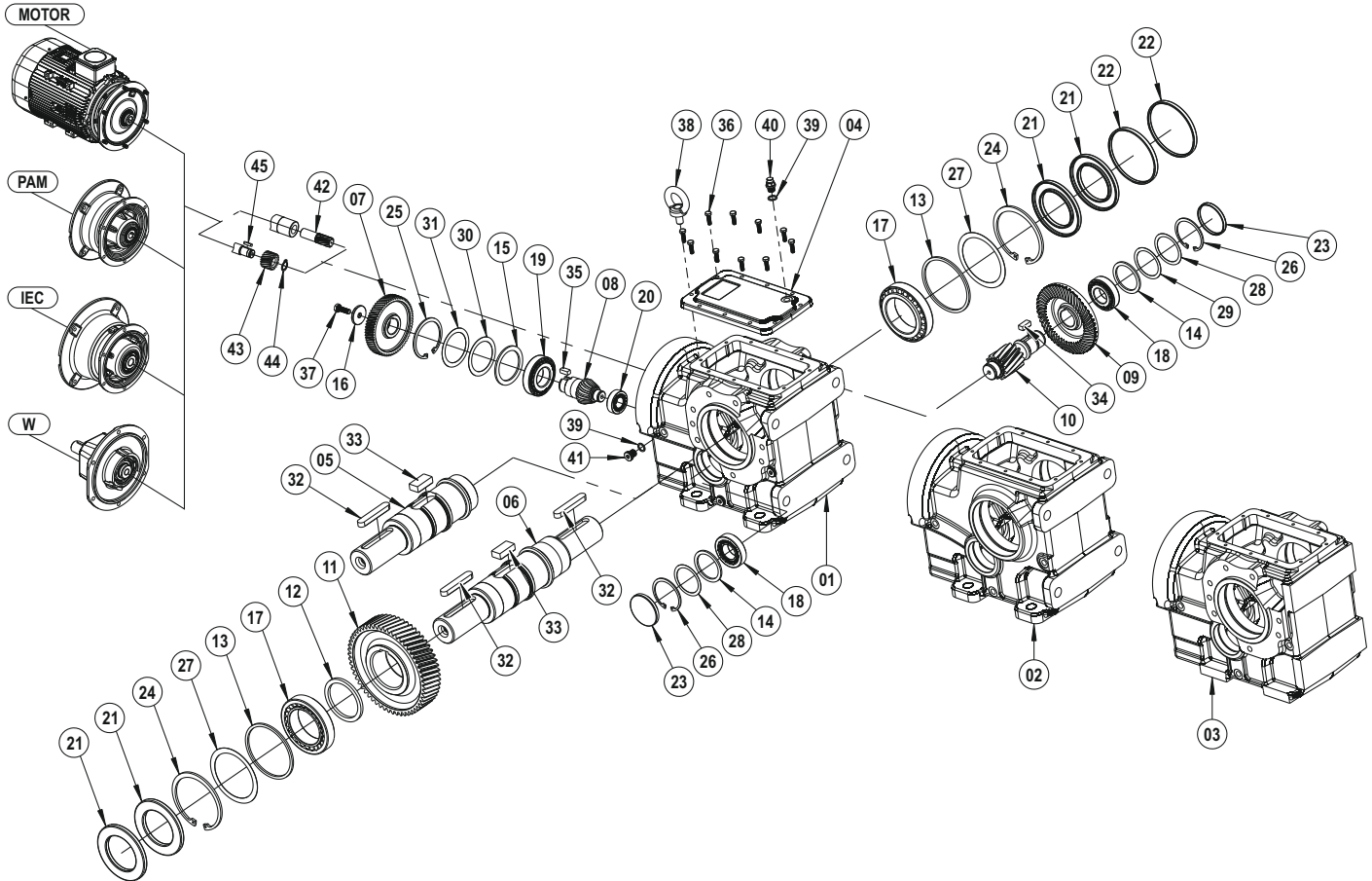
We reserve the right to our company to make changes or  
modifications to catalogue without prior notice.





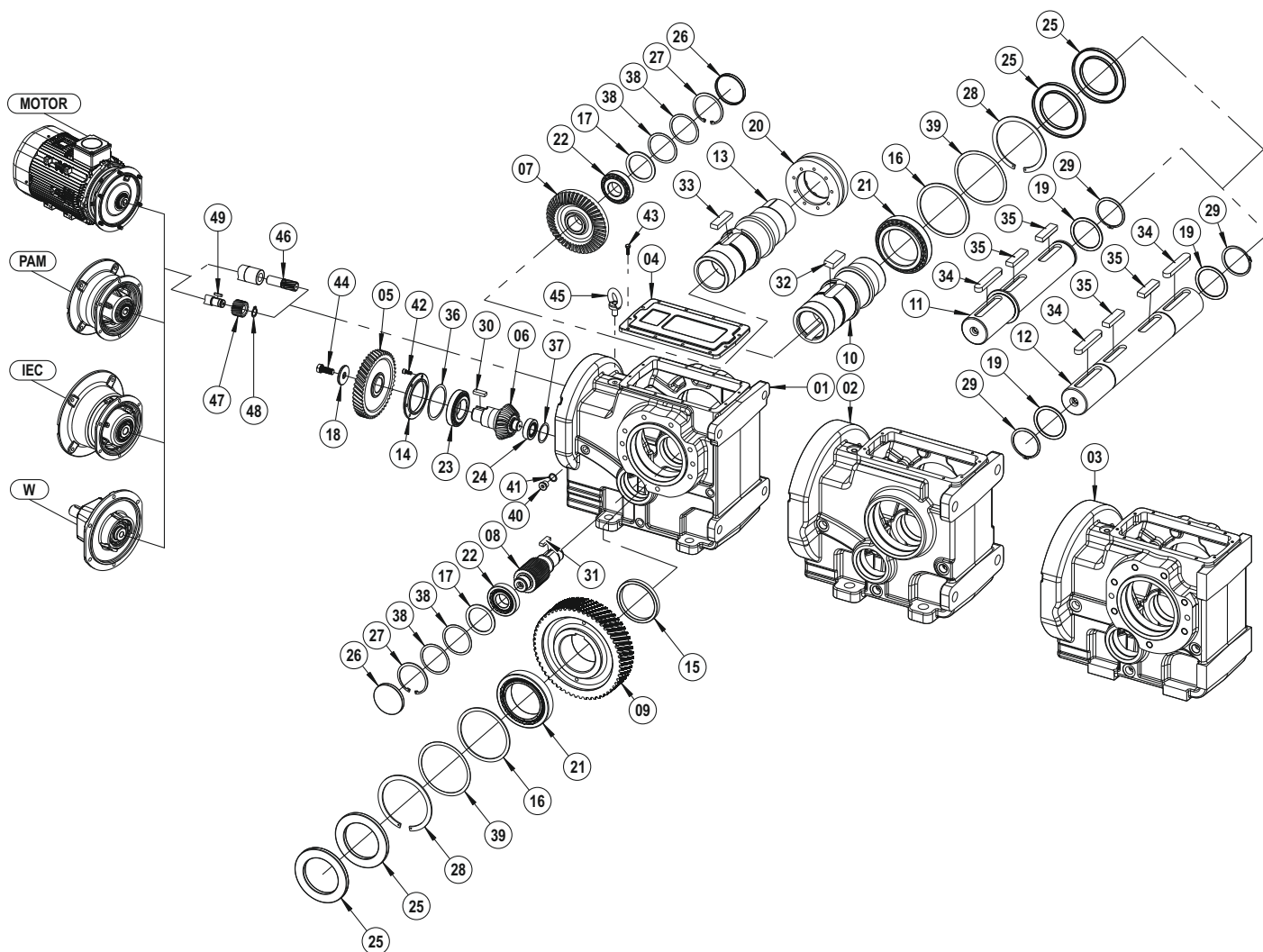


**TMA - ÇMA**



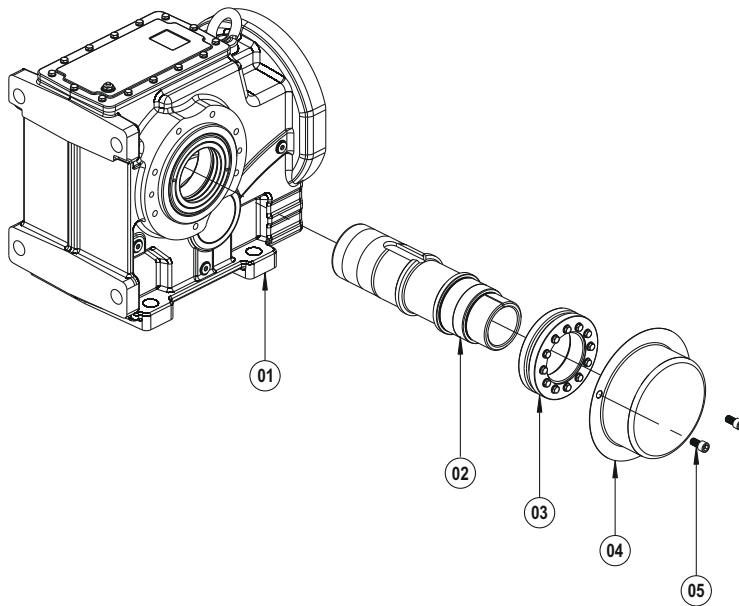
- |                              |                              |
|------------------------------|------------------------------|
| 01 Gear Case (With Foot-B14) | 24 Circlip (DIN 472)         |
| 02 Gear Case (With Foot)     | 25 Circlip (DIN 472)         |
| 03 Gear Case (With Flange)   | 26 Circlip (DIN 472)         |
| 04 Cover                     | 27 Shim (DIN 988)            |
| 05 Output Solid Shaft        | 28 Shim (DIN 988)            |
| 06 Output Solid Shaft        | 29 Shim (DIN 988)            |
| 07 Driving Gear              | 30 Shim (DIN 988)            |
| 08 Pinion Shaft              | 31 Shim (DIN 988)            |
| 09 Driven Gear               | 32 Key (DIN 6885)            |
| 10 Pinion Shaft              | 33 Key (DIN 6885)            |
| 11 Driven Gear               | 34 Key (DIN 6885)            |
| 12 Spacer                    | 35 Key (DIN 6885)            |
| 13 Washer                    | 36 Bolt (DIN 933)            |
| 14 Washer                    | 37 Bolt (DIN 933)            |
| 15 Washer                    | 38 Eye Bolt (DIN 580)        |
| 16 Washer                    | 39 Washer (DIN 7603)         |
| 17 Bearing                   | 40 Vent Plug                 |
| 18 Bearing                   | 41 Oil Plug (DIN 908)        |
| 19 Bearing                   | 42 Driving Pinion            |
| 20 Bearing                   | 43 Driving Pinion (With Key) |
| 21 Oil Seal                  | 44 Segman (DIN 471)          |
| 22 Oil Cover                 | 45 Key (DIN 6885)            |
| 23 Oil Cover                 |                              |

## Output Options



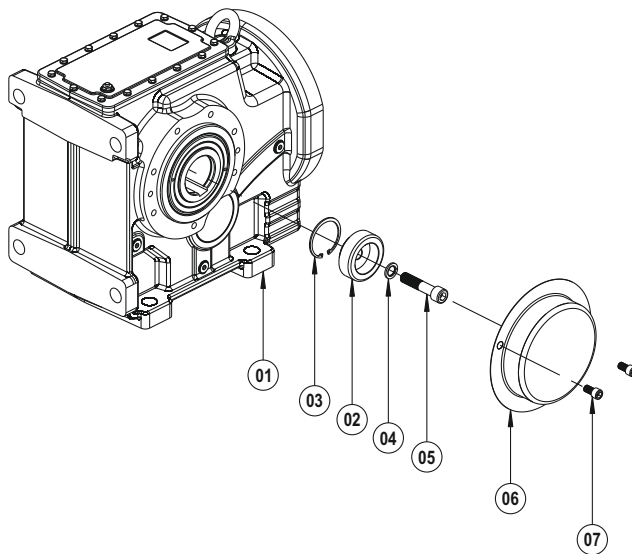
- |                                  |                              |
|----------------------------------|------------------------------|
| 01 Gear Case (With Foot-B14)     | 26 Oil Cover                 |
| 02 Gear Case (With Foot)         | 27 Circlip (DIN 472)         |
| 03 Gear Case (With Flange)       | 28 Circlip (DIN 472)         |
| 04 Cover                         | 29 Circlip (DIN 471)         |
| 05 Driving Gear                  | 30 Key (DIN 6885)            |
| 06 Pinion Shaft                  | 31 Key (DIN 6885)            |
| 07 Driven Gear                   | 32 Key (DIN 6885)            |
| 08 Pinion Shaft                  | 33 Key (DIN 6885)            |
| 09 Driven Gear                   | 34 Key (DIN 6885)            |
| 10 Hollow Shaft                  | 35 Key (DIN 6885)            |
| 11 Output Solid Shaft (With Key) | 36 Shim (DIN 988)            |
| 12 Output Solid Shaft (With Key) | 37 Shim (DIN 988)            |
| 13 Shrink Disk Hollow Shaft      | 38 Shim (DIN 988)            |
| 14 Bearing Flange                | 39 Shim (DIN 988)            |
| 15 Spacer                        | 40 Oil Plug (DIN 908)        |
| 16 Washer                        | 41 Washer (DIN 7603)         |
| 17 Washer                        | 42 Bolt (DIN 933)            |
| 18 Washer                        | 43 Bolt (DIN 933)            |
| 19 Washer                        | 44 Bolt (DIN 933)            |
| 20 Shrink Disk                   | 45 Eye Bolt (DIN 580)        |
| 21 Bearing                       | 46 Driving Pinion            |
| 22 Bearing                       | 47 Driving Pinion (With Key) |
| 23 Bearing                       | 48 Circlip (DIN 471)         |
| 24 Bearing                       | 49 Key (DIN 6885)            |
| 25 Oil Seal                      |                              |

## Accessories



### Shrink Disk, Protection Cover

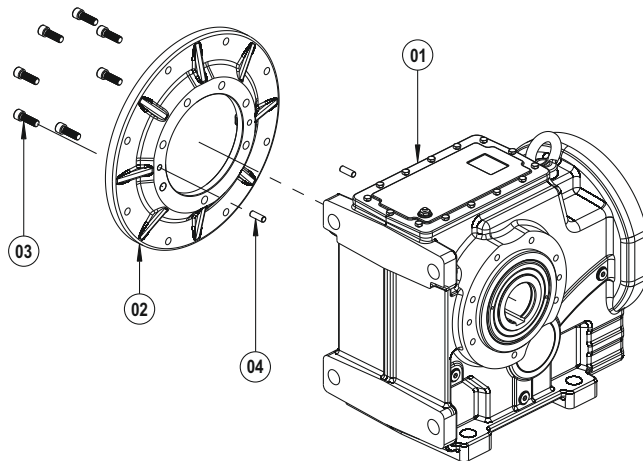
- 01 K - AF Kit
- 02 Shrink Disk Hollow Shaft
- 03 Shrink Disk
- 04 Shrink Disk Cover
- 05 Bolt (DIN 912)



### Puller, Protection Cover

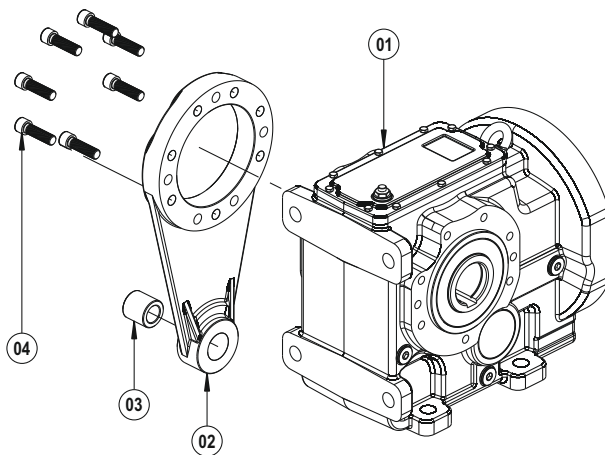
- 01 K - AF Kit
- 02 Puller Washer
- 03 Circlip (DIN 472)
- 04 Washer (DIN 127)
- 05 Bolt (DIN 912)
- 06 Protection Cover
- 07 Bolt (DIN 912)

## Accessories



### B5 Output Flange

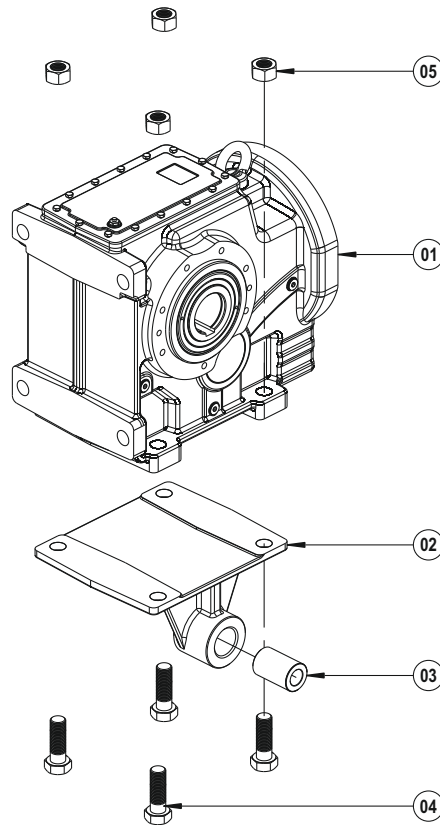
- 01 K - AF Kit
- 02 B5 Output Flange
- 03 Bolt (DIN 912)
- 04 Pin



### Torque Arm

- 01 K - AF Kit
- 02 Torque Arm
- 03 Rubber Buffer
- 04 Bolt (DIN 912)

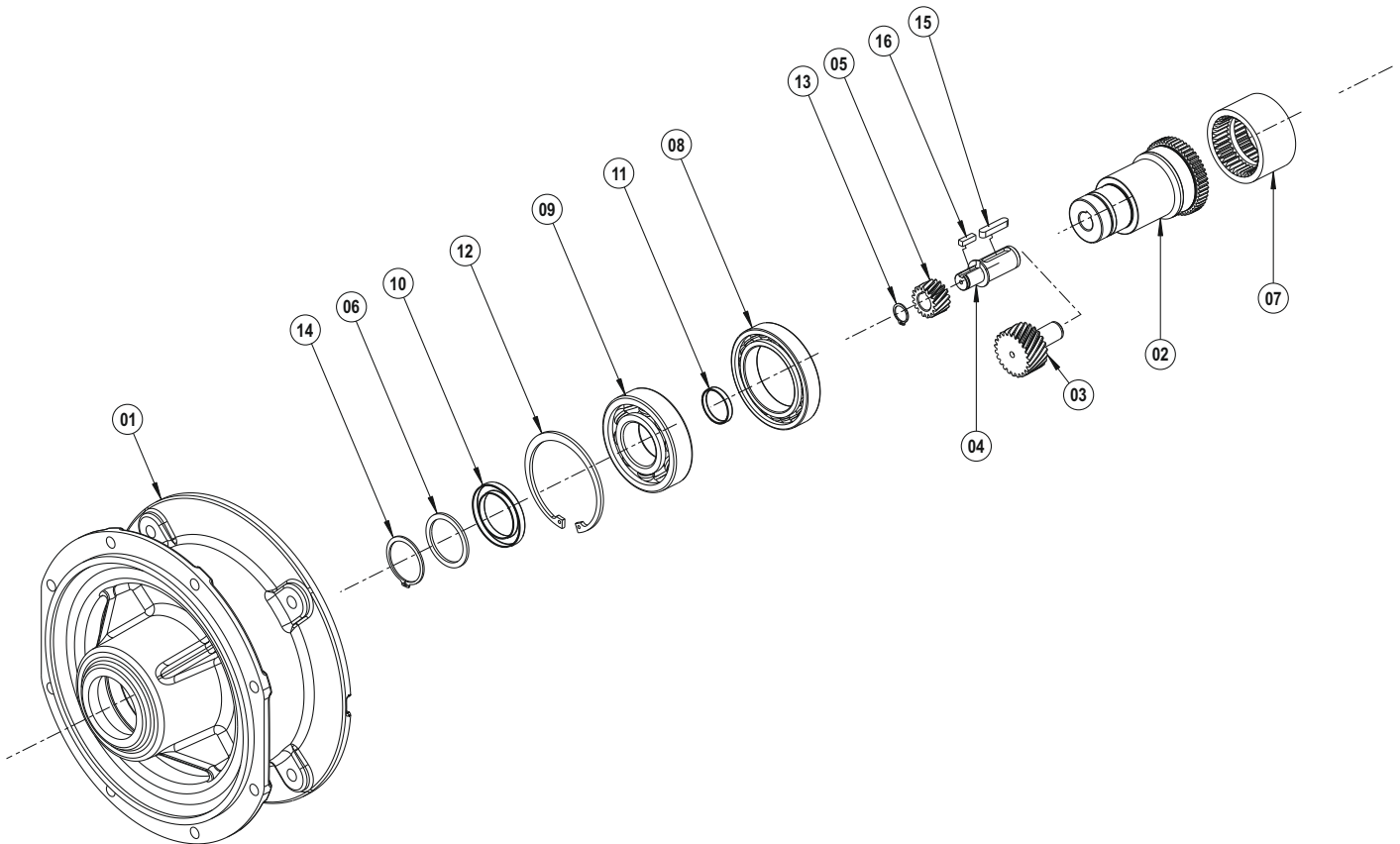
## Accessories



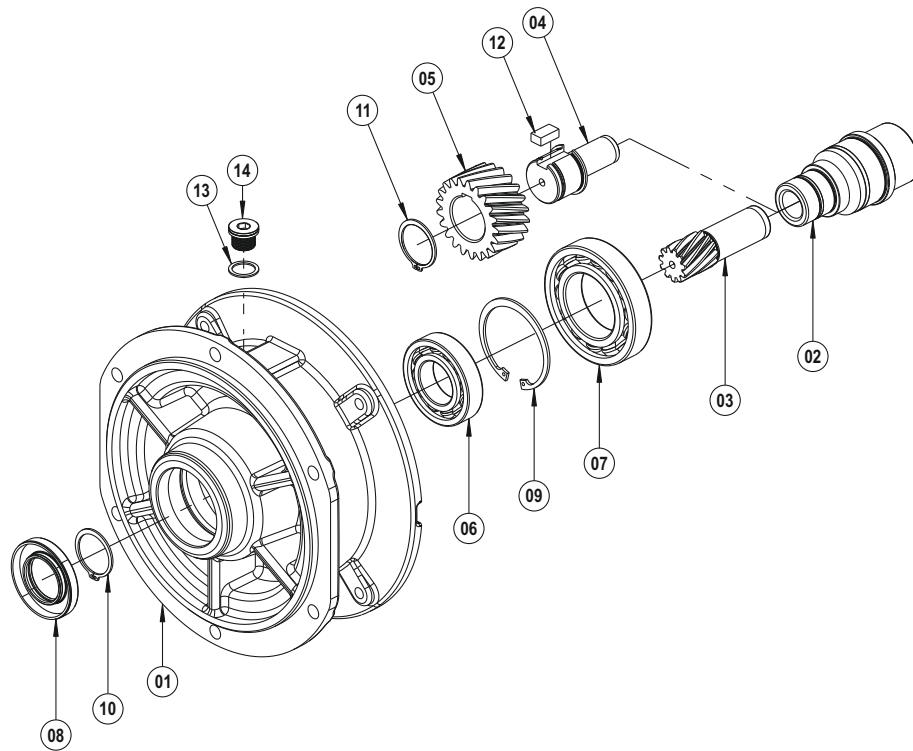
### Torque Arm Platform

- 01 K - AF Kit
- 02 Torque Arm Platform
- 03 Rubber Buffer
- 04 Bolt (DIN 933)
- 05 Nut (DIN 934)

## IEC 63 ... 280

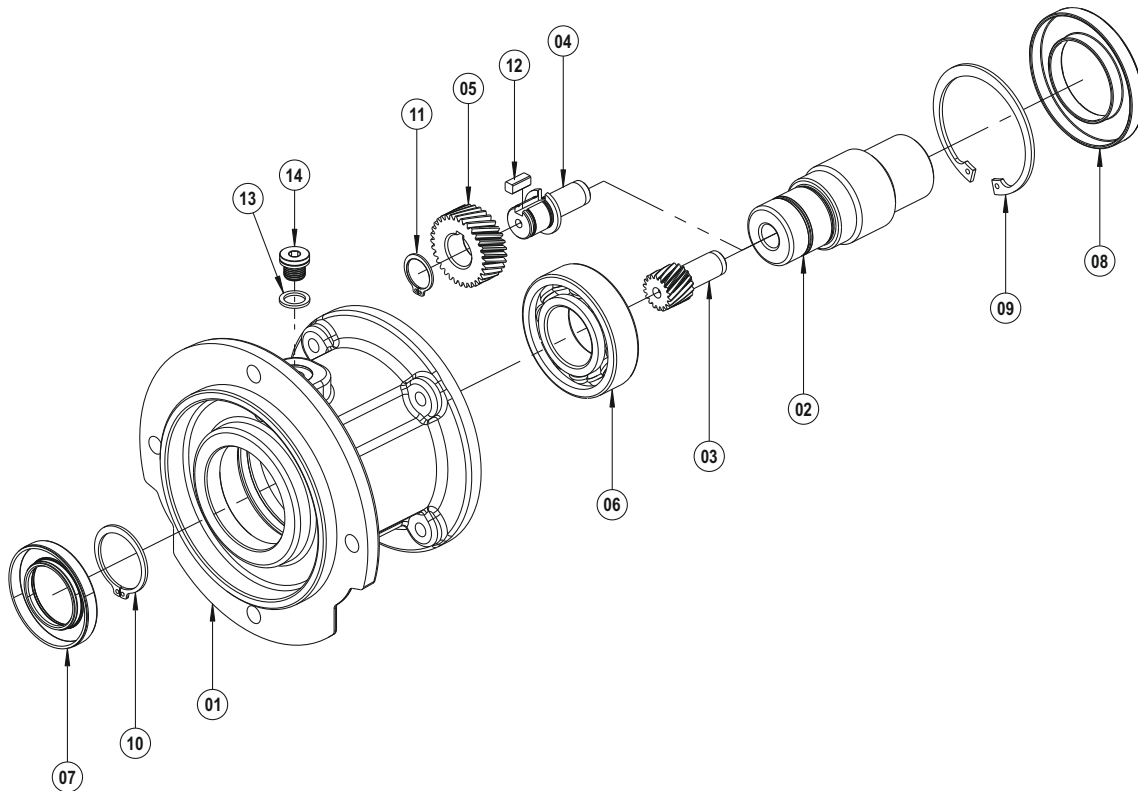


- 01 Gear Case
- 02 IEC Shaft
- 03 Driving Pinion
- 04 Pinion Shaft (With Key)
- 05 Driving Pinion (With Key)
- 06 Washer
- 07 Coupling
- 08 Bearing
- 09 Bearing
- 10 Oil Seal
- 11 Oil Cover
- 12 Circlip (DIN 472)
- 13 Circlip (DIN 471)
- 14 Circlip (DIN 471)
- 15 Key (DIN 6885)
- 16 Key (DIN 6885)



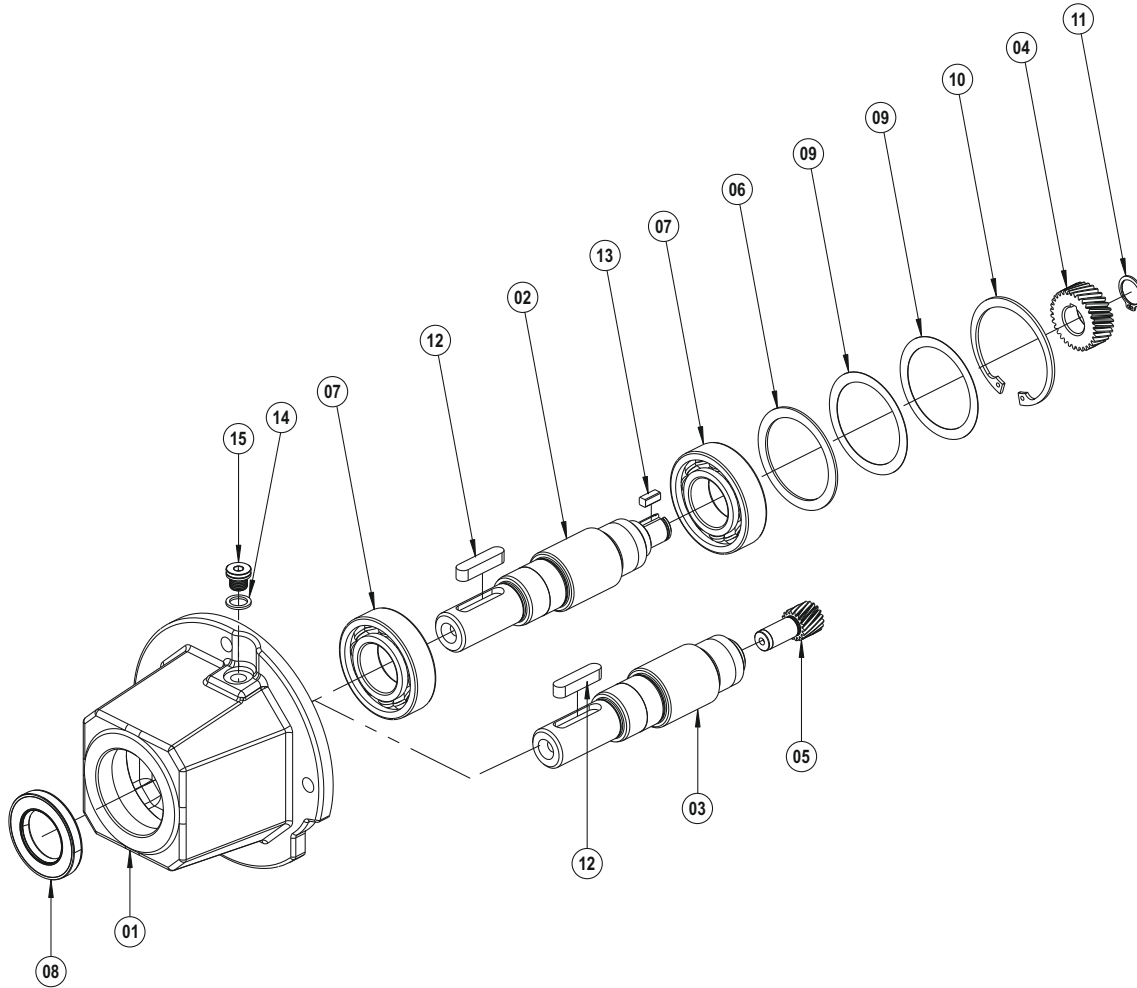
- 01 Gear Case
- 02 PAM Shaft
- 03 Driving Pinion
- 04 Pinion Shaft (With Key)
- 05 Driving Pinion (With Key)
- 06 Bearing
- 07 Bearing
- 08 Oil Seal
- 09 Circlip (DIN 472)
- 10 Circlip (DIN 471)
- 11 Circlip (DIN 471)
- 12 Key (DIN 6885)
- 13 Washer (DIN 7603)
- 14 Oil Plug (DIN 908)

PAM B14 / 63 ... 132



- 01 Gear Case
- 02 PAM Shaft
- 03 Driving Pinion
- 04 Pinion Shaft (With Key)
- 05 Driving Pinion (With Key)
- 06 Bearing
- 07 Oil Seal
- 08 Oil Seal
- 09 Circlip (DIN 472)
- 10 Circlip (DIN 471)
- 11 Circlip (DIN 471)
- 12 Key (DIN 6885)
- 13 Washer (DIN 7603)
- 14 Oil Plug (DIN 908)





- 01 Gear Case
- 02 W Shaft (With Key)
- 03 W Shaft
- 04 Driving Pinion (With Key)
- 05 Driving Pinion
- 06 Washer
- 07 Bearing
- 08 Oil Seal
- 09 Shim (DIN 988)
- 10 Circlip (DIN 472)
- 11 Circlip (DIN 471)
- 12 Key (DIN 6885)
- 13 Key (DIN 6885)
- 14 Washer (DIN 7603)
- 15 Oil Plug (DIN 908)





- In der Schlinge 6, D-59227 Ahlen / GERMANY
- T: +49 (0) 2382-855 7010 • F: +49 (0) 2382-855 7015
- [info@nrwdrivetechnologies.com](mailto:info@nrwdrivetechnologies.com) • [www.nrwdrivetechnologies.com](http://www.nrwdrivetechnologies.com)